



**Press Advisory**

For Immediate Release

**Media Contact:**

**Amy Delman** 201.563.4614

[Email](#)

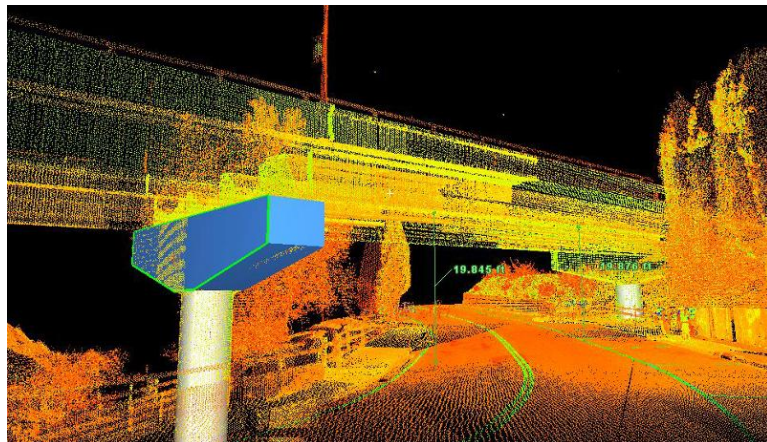
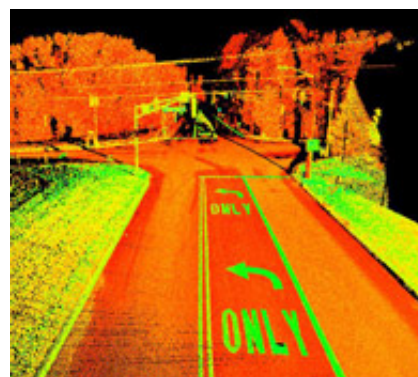
## Matrix Implements High-Definition Surveying and 3D Laser Scan Technologies

Matrix New World Engineering, Inc., announced new High-Definition Surveying / 3D laser scanning services for its clients.

East Hanover, NJ - August 24, 2011

Matrix New World Engineering, Inc. (Matrix) is proud to announce the implementation of High-Definition Surveying and 3D laser scanning (3DLS) services. This new technology reduces labor and construction costs by streamlining data gathering, expediting design schedules, and improving the overall design process.

By providing instant, real-time field data collection, contractors, engineers, and architects are able to better visualize the true 'as-built' conditions of any facility or site. By streamlining data gathering, high-definition surveying (HDS) captures 'as-built'/'as-found' information from any man-made or natural structure for any application.



Some of the benefits projects obtain from utilizing this technology are:

- Improved schedules
- Reduced engineering field time
- Improved labor and material costs
- Reduced safety concerns when gathering data from inaccessible or unstable/unsafe structures and in extreme weather or terrain
- Greatly improved accuracy and reduce re-work
- Instant reproduction obsolete or missing drawings
- Capture of 360-degree field of view (FOV)

According to Senior Vice President Dennis Petrocelli, PG, "Matrix is proud to provide the latest surveying technologies, which reduce labor and construction costs".

Formed in 1990, Matrix is a leading woman-owned full-service engineering and environmental services firm. Matrix is working on a wide range of infrastructure, building and environmental projects for public and private-sector clients throughout the United States. The East Hanover, NJ-based company has offices in the Northeast as well as Alabama and Arizona.

For more information visit: [www.matrixnewworld.com](http://www.matrixnewworld.com) or contact: James D. Sens, PLS, PP, 973.240.1800 [Email](#)

“Matrix is proud to provide the latest surveying technologies, which reduce labor and construction costs.”

**Dennis Petrocelli, PG**  
Senior Vice President

